

# Naches-Selah Irrigation District

SPRING/SUMMER 2024

VOLUME 37

What's  
New:

WATER SEASON  
START UP

2024  
ASSESSMENT  
RATE

TUNNEL  
REPAIRS

*April 1*

## Water Start Date

We will open the diversion gate at the Naches River on April 1, the first day of our water right. On April 2, the remainder of canals will begin filling. The pipelines will be filled the following days. It can take a few days to fill the system and flush out debris.

We have rotating patrolmen on duty every day during the water season. Our office is open 8:00 a.m. - 4:00 p.m. Monday-Friday. Contact us if you have any issues and we will dispatch the patrolman assigned to your route that day.

**We are accepting irrigation pre-orders now!**  
(509) 697-4177 or [n-sid.org](http://n-sid.org)

## *2024 Assessment Rate*

The assessment rate for 2024 will be \$600 per Miner's Inch. The minimum rate is one Miner's Inch.

Repayment of the \$6.1 million bond that was approved in 2021 to replace No. 3 Lateral Wood Flumes has begun. In the bond election information provided to water users, rates were projected to increase to \$590-620 between 2022-2027, but we were able to keep rates at \$580 from 2020-2023. Inflation has affected all costs over these years. The district finds it now necessary to increase the 2024 rates to meet our obligations.

Thank you for your commitment to modernizing the irrigation system to continue the reliable and safe delivery of water to your properties. Your irrigation assessments are included in your property taxes and are paid to the Yakima County Treasurer's office.



## BOARD OF DIRECTORS:

Tom Allan, President  
Rod Matson, Director  
Craig Sundquist, Director

104 W. NACHES AVE., STE. H.  
SELAH, WA 98942  
(509) 697-4177  
**N-SID.ORG**

# Aquatic Weed & Herbicide Application

## Legal Notice

The Naches-Selah Irrigation District will be applying aquatic weed herbicides to its irrigation canals and laterals between April 1, 2024, and October 31, 2024, in accordance with Washington Department of Ecology pesticide laws, rules and general permit. The purpose of the herbicide applications is to control aquatic weeds within the irrigation delivery system. The herbicides in use include copper sulphate. (Pesticide EPA label and WSDA are also followed as applicable.)

Treatments will be made to the irrigation facilities within the boundaries of the Naches-Selah Irrigation District located in Yakima County. Applications are generally made every two weeks starting in May ending in October as needed. Weather and other conditions determine the application schedule on an as needed basis.

Waters within the District are intended for agricultural purposes only and are not for human consumption or primary contact such as swimming or aquaculture. Irrigation facilities can be dangerous, and are intended for District operation and maintenance personnel only. District facilities are not for public use and are not to be trespassed upon. Herbicides will be applied under the direction of licensed District personnel.

Naches-Selah Irrigation District  
(509) 697-4177

Washington Department of Ecology  
Central Office (509) 575-2800

## Moss & Algae Control

Chemicals we use to control moss and algae growth are not harmful to livestock or pets, but treated water may hurt fish and aquatic wildlife in ponds. We will post the chemical application 24 hours in advance on our website. If you'd like to be notified by email and/or text message, sign up for notifications at [n-sid.org/enotify](https://www.n-sid.org/enotify).

# District Updates

## From the Manager

Justin Harter  
District Manager



Frequently I have opportunities to share the story of the Selah Valley Canal and its water users. This winter I presented at a national conference on the efforts over the last 30 years to modernize our District. At second, the muddy waters from wildfires in our watershed that impacted everyone last summer.

The Selah Valley Canal is a 136-year story of success. Not without challenges, committed people have kept the water flowing. The concrete tunnels built in 1918 and 1919 are demanding more attention. Last issue "Tunnel Construction during WWI", included excerpts from a 1919 article by then District Engineer E M Chandler. The extent of needed tunnel repairs was not known last fall. More has been learned on the original construction from over 105 years ago.

In my manager role, I look to the past to see solutions and improvements that have lasted through the decades. Learning how to repair or where needed, to replace parts of the system. Attention is given to the present as water needs to flow again in April. A view into the future as years are required to plan and fund system modernization for the Selah Valley Canal's next century of service.

April will be the 20th time I have overseen the spring start-up of the canals. Hoping we all have success in 2024.

## Water Rental

If you participate in the water rental program, payments for water rental IN are due at our office by April 15. We accept cash or check but are unable to accept credit card payments at this time.

Payments for water OUT will be mailed May 1, provided the first half of your assessment has been paid to Yakima County Treasurer.

## Director Position #1 and 2024 President

Craig Sundquist was reappointed by petition to Director, Pos. No. 2 in November. This will be his 24th year serving as a Director.

In January, Tom Allan was re-elected the 2024 President of the Board.

## Yakima Basin Joint Board

NSID District Manager, Justin Harter, was elected President of the Yakima Basin Joint Board.

[linktr.ee/yakimabasinjointboard](https://linktr.ee/yakimabasinjointboard)

## MRSC Rosters

We transitioned our Small Works Public Roster, Consultant Roster and Vendor Roster to the Municipal Research and Services Center (MRSC) shared online database.

New state requirements this year made it a good time to switch to the official state roster along with 690+ other Washington public agencies.

Industry partners have provided favorable feedback on their experience with the system, and it promises to make contracting easier for agencies and contractors.

If you were previously on our rosters, please register at [mrscresters.org](https://mrscresters.org) and add Naches-Selah Irrigation District to your account.

## NSID Processing Fees

**Short Plats & Boundary Line Adjustments** \$100

**Long Plats** \$100 + \$20/parcel  
+ Water agreement \$25  
+ Additional drafts *labor rate*

**Water Sales/Transfers**  
Single owner \$25/parcel  
Multiple owners \$50/parcel

**Rental Water**  
Lessor (water out) \$20/annually  
Lessee (water in) \$30/miner's inch

# Tunnel Repairs

This winter during infrastructure inspections, it became clear that some of the 15 concrete tunnels in our district are in need of repairs to varying degrees. Tunnel No. 9 had a cracked section that was allowing water seepage behind the wall. This needed to be repaired urgently before water begins this season. Selland Construction was awarded a contract for \$175,300 to remove and replace a section of No. 9 Tunnel. They began work on February 23 and the project is going smoothly. It is not expected to delay the water start date. The cost of the No. 9 Tunnel repair was covered by surplus funds the District maintains.

Of our 15 tunnels, one tunnel was built in 1918 and eight were built in 1919. Patrolmen have been working on many of them this winter to seal cracks and identify problems.

The District has tunnels on two sections of the main canal - "A" and "D". Section D has automated gates, which would provide some responsiveness in a tunnel failure event.

The District intends to put a contract out to bid for an engineering study to identify a triage plan for the tunnel repairs. Some districts have reported success with spray-on linings, as several of the tunnels have limited access for heavy equipment and concrete delivery.

For the latest information on this project, please visit our website at [n-sid.org](http://n-sid.org).

## 2024 Water Supply Outlook

The water supply for the Yakima Basin has been in the news for a couple months now and you are likely concerned how this affects your water use. As of March 1, the Naches Basin Snowpack is 77% of median. ([nrca.usda.gov](http://nrca.usda.gov))

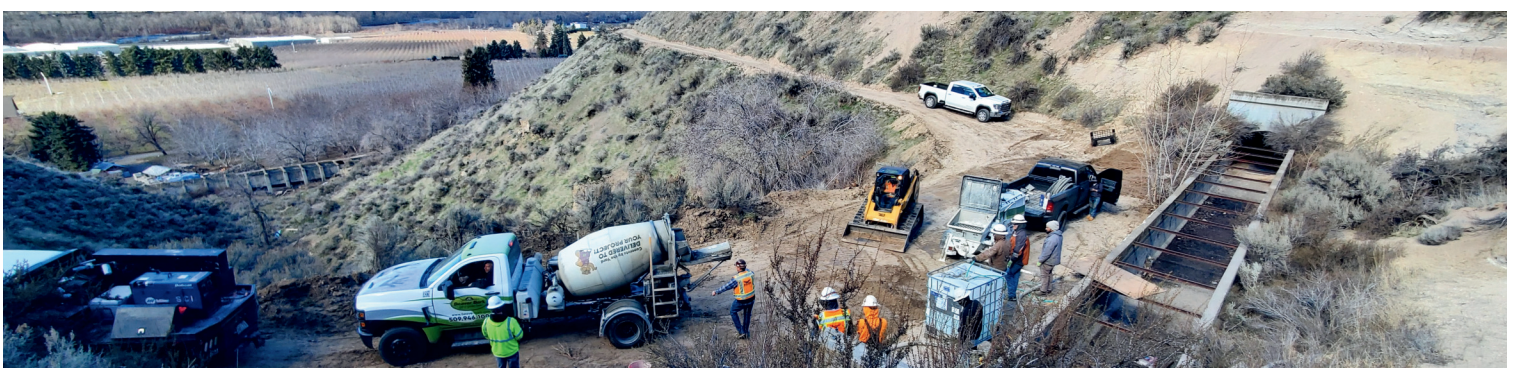
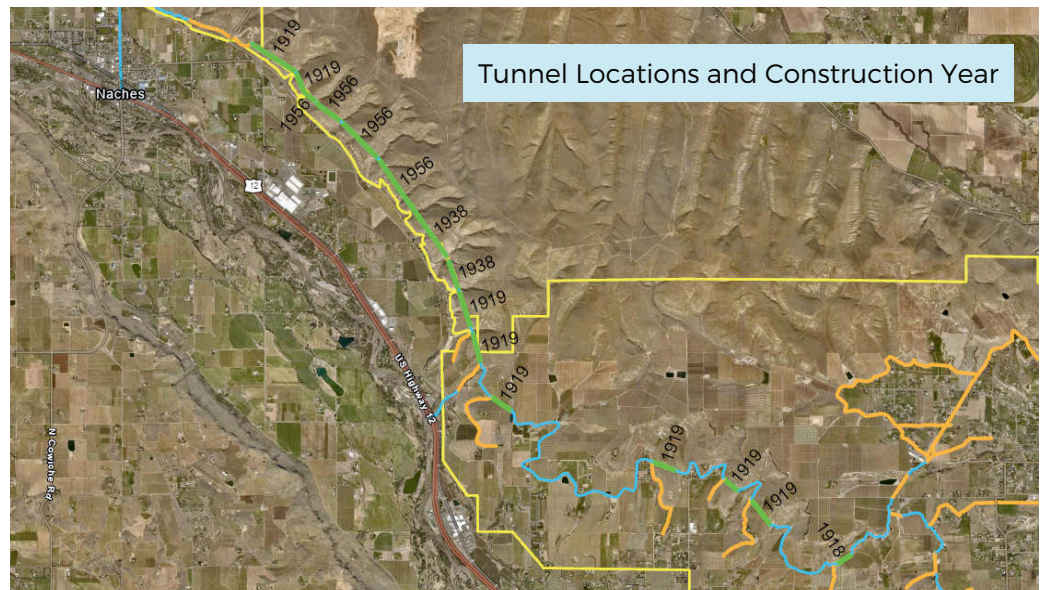
A drought has been declared for the water season with a 72% proration at the beginning of the season. NSID holds the total water right in trust for water users, and is a senior water right district. Only 8% of our water supply is subject to the proration limit.

However, we ask you to conserve where possible and repair any leaks in your system. Adequate flows are also necessary for fish spawning and power generation. Irrigation districts further down the valley are requesting the same from their users.

*Thank you!*

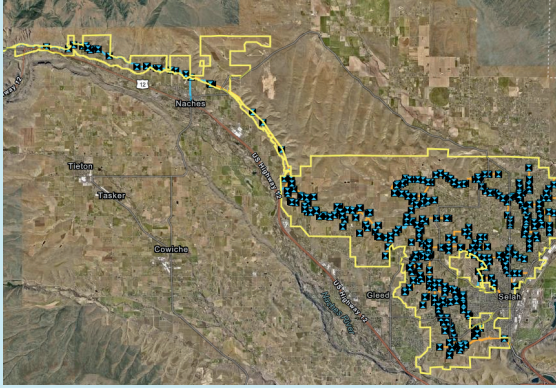


Tunnel No. 9



# Naches-Selah Irrigation District

## New Interactive District GIS Map



Coming soon to our website, we are sharing a tool with you that we've used for years to identify District-owned canal, pipes and deliveries within our boundaries.

You will be able to search your address to see where your water originates and is delivered.

Visit [n-sid.org](http://n-sid.org) to try it out!

## Emergency Contact Info

Please take a moment to confirm we have current phone numbers and emails for you in case of emergency breaks or a delivery shutdown.

**(509) 697-4177** or [info@n-sid.org](mailto:info@n-sid.org)

[n-sid.org](http://n-sid.org)



## Spring/Summer 2024 Board Meetings

- April 10
- May 10
- June 10
- July 10
- August 9
- September 10

NSID board meetings are held in the District office at 9:00 a.m. and are open to the public. Minutes and agendas are available to view at [n-sid.org](http://n-sid.org).

## Office Closures

Our office will be closed for the following holidays this Spring & Summer:



May 27 - Memorial Day  
July 4 - Independence Day

NEWSLETTER  
SUMMER  
& SPRING